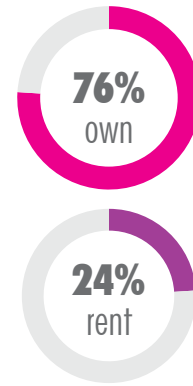


2015 Pitt Meadows demographics

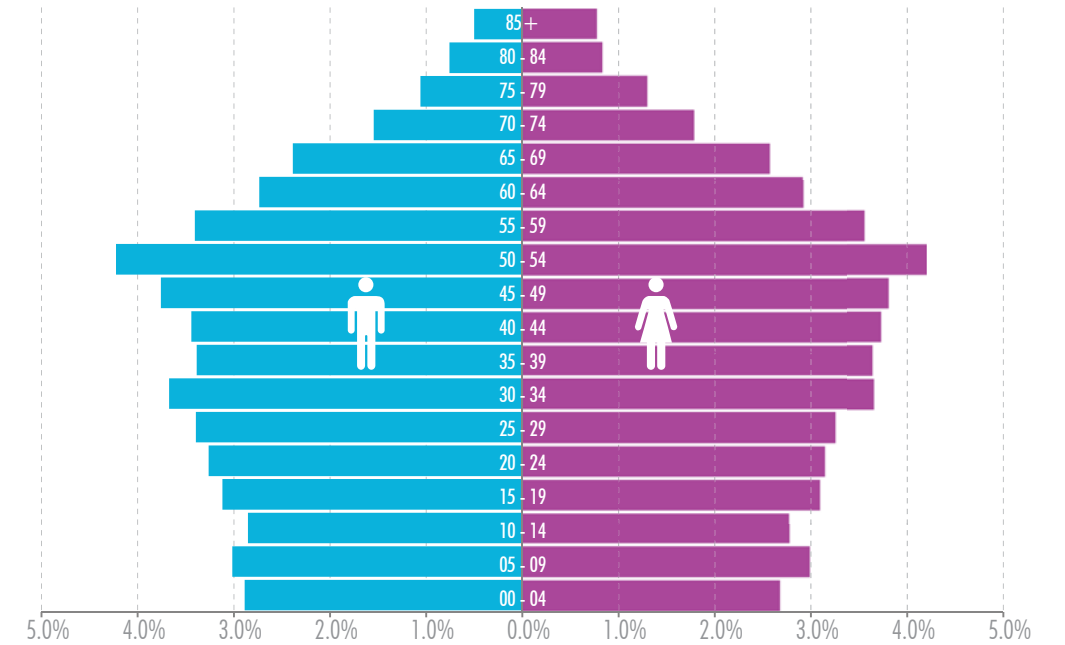
POPULATION



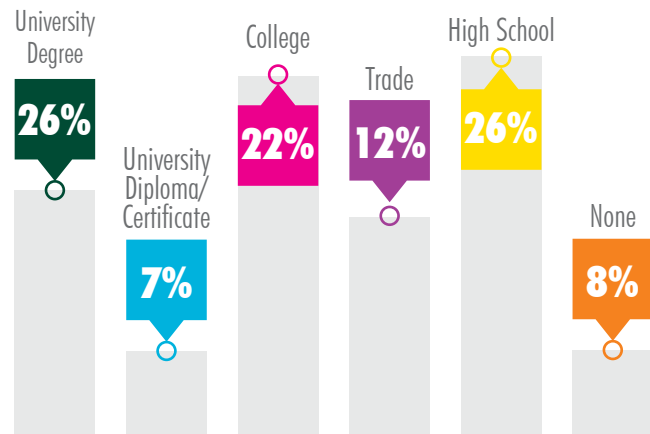
- 2.59 Persons per household
- 39.5 Median age
- \$96K Average household Income



AGE DISTRIBUTION

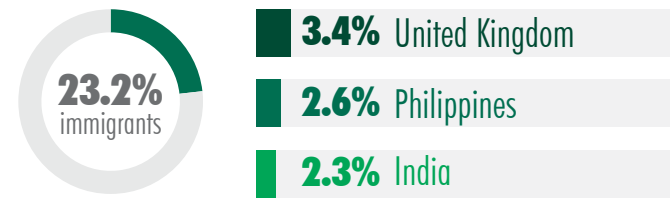


EDUCATION

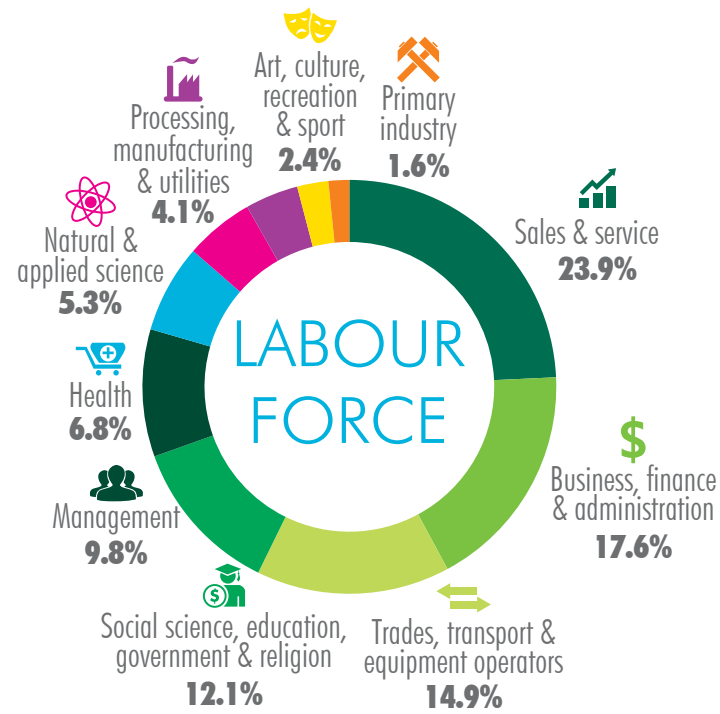
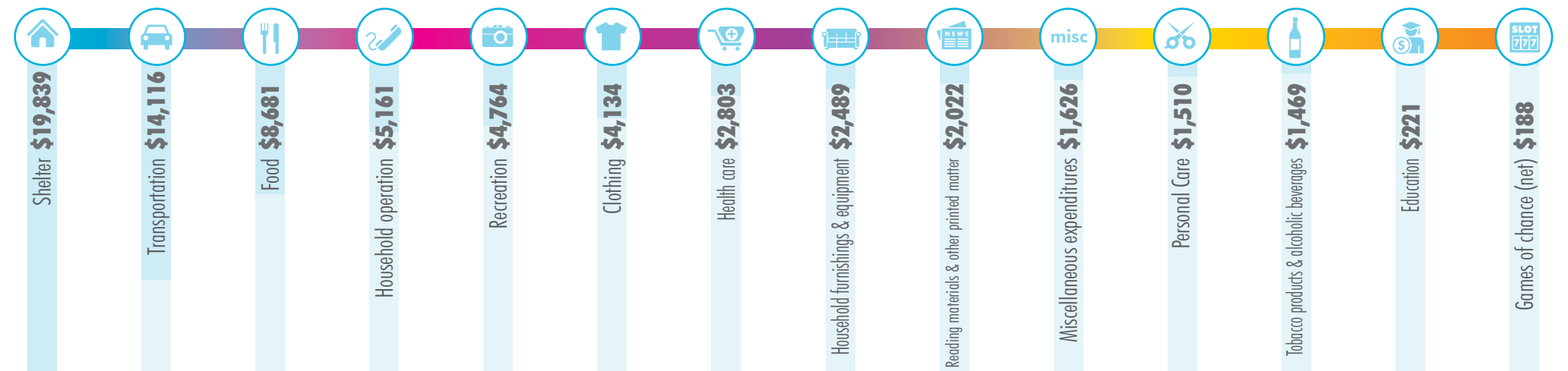


IMMIGRATION

Top 3 Countries of Immigrant Origin



HOUSEHOLD EXPENDITURE



*Participation Rate: 70.9%

For further information regarding demographics, please contact Naz Ali | National GIS Coordinator 604.662.5173 canadamapping@cbre.com

This disclaimer shall apply to CBRE Limited, Real Estate Brokerage, and to all other divisions of the Corporation ("CBRE"). The information set out herein, including, without limitation, any projections, images, opinions, assumptions and estimates obtained from third parties (the "Information") has not been verified by CBRE, and CBRE does not represent, warrant or guarantee the accuracy, correctness and completeness of the Information. CBRE does not accept or assume any responsibility or liability, direct or consequential, for the Information or the recipient's reliance upon the Information. The recipient of the Information should take such steps as the recipient may deem necessary to verify the Information prior to placing any reliance upon the Information. The Information may change and any property described in the Information may be withdrawn from the market at any time without notice or obligation to the recipient from CBRE. CBRE and the CBRE logo are the service marks of CBRE Limited and/or its affiliated or related companies in other countries. All other marks displayed on this document are the property of their respective owners. All Rights Reserved.

Demographic Sources: Canada Location Analytics & Mapping canadamapping@cbre.com, Emvionics Analytics.

